



714X



Technical Data

***CERBE Distribution Inc.***

5270 Mills Street  
Rock Forest (Quebec) J1N 3B6  
CANADA

Phone : (819) 564-7883 Fax : (819) 564-4668  
Internet : [www.cerbe.com](http://www.cerbe.com) Email : [info@cerbe.com](mailto:info@cerbe.com)

---

## TABLE OF CONTENTS

A. CHEMICAL NAME .....	3
B. COMMERCIAL NAME .....	3
C. COMMERCIAL PRESENTATION .....	3
D. CHEMICAL FORMULA .....	4
E. CHEMICAL ANALYSIS RESULTS .....	4
1. Proteins and immunoglobulins .....	4
2. Analysis and identification of organic molecules .....	5
F. IMMUNE ASSAY TEST (IN VITRO) : SUMMARY.....	7
G. HOW 714X WORKS .....	8
H. THERAPEUTIC EFFECTS OF THE TREATMENT.....	10
I. INTERACTIONS WITH OTHER HEALTH PRODUCTS .....	10
1. With non-conventional treatments.....	10
2. With conventional treatments .....	11
J. DOSAGE .....	12
K. HOW TO ADMINISTER 714X.....	13
1. Perinodular injections .....	13
2. Inhalation by nebulizer .....	13
L. SIDE EFFECTS.....	14
M. CONCLUSION.....	14

---

## A. CHEMICAL NAME

Trimethylaminohydroxybicycloheptane Chloride.

## B. COMMERCIAL NAME

The product is known commercially as 714X.

## C. COMMERCIAL PRESENTATION

714X is manufactured by the private laboratory **Centre expérimental de recherches biologiques de l'Estrie Inc. (C.E.R.B.E. inc.)**. The product is exclusively distributed by **CERBE Distribution Inc.** and its authorized agents.

714X, as developed by the researcher–biologist Gaston Naessens, is available in two forms :

### 1. 714X developed for perinodular injections (basic treatment)



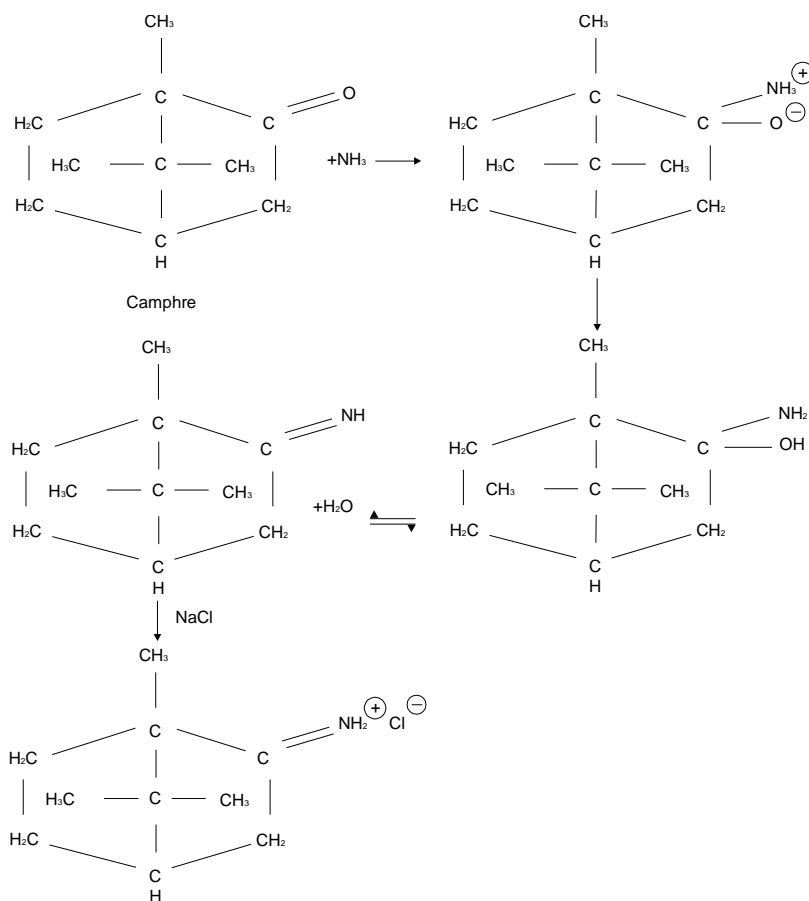
This product is available in 6.5 ml vials. Two vials are required to complete 21 consecutive days of treatment referred to as one cycle. This basic treatment is directly administered into the large lymphatic circulation (*See Section J*).

### 2. 714X developed for inhalation through the respiratory tract (secondary treatment, if necessary).



The secondary treatment of 714X is performed with the use of a medical device known as a *nebulizer*. This treatment is added to reach the smaller segment of the lymph system known as the small lymphatic circulation (*See Section J*).

## D. CHEMICAL FORMULA



## E. CHEMICAL ANALYSIS RESULTS

714X contains nitrogen as its primary ingredient, camphor as its vehicle, mineral salts and 18 trace elements.

### *Content :*

The results described below were obtained through a gas chromatography and a mass spectrometry. The chemical analysis was performed by an independent laboratory asked to identify the ingredients of an unidentified product.

### 1. Proteins and immunoglobulins

#### *1.1 Analysis*

No precipitation is obtained when 714X is combined with trifluoroacetic acid, indicating an absence of proteins.

Densitometry analysis reveals no presence of immunoglobulins or other proteins.

## 1. Proteins and immunoglobulins (continued)

### 1.2 Results

714X has no proteins and no immunoglobulins.

## 2. Analysis and identification of organic molecules by way of gas chromatography coupled with a mass spectrometry

### 2.1 Analysis

After concentrating the sample twice under a nitrogen flow, one microliter of the liquid was injected under controlled conditions.

### 2.2 Results

The chromatogram reveals three peaks :

- Peak number 1 (evaluated after 10 minutes 18 seconds) has been identified by its mass spectrum and shows the main characteristics of CAMPHOR or trimethyl (1.7.7) bicyclo (2.2.1) heptanone-2 (C<sub>10</sub>H<sub>16</sub>O, m.w. = 152).
- Peaks number 2 and 3 which are not well separated, coelute after 15 minutes and 16 minutes 28 seconds respectively.
- Peak number 2 corresponds to an HCl molecule. Its mass spectrum could not be identified. The base peak at m/e 46 is characteristic of a nitrous compound (NO<sub>2</sub><sup>+</sup>) and is often accompanied as is the case here with a fragment (NO<sup>+</sup>) at m/e 30.

### 2.3 Camphor content

The gas chromatography (Intersmat 120 DFL) with a 12 m long OV1 column at a temperature of 70 °C reveals a camphor level of 0.09 mg/ml.

### 2.4 Identification of the nitrogen derivative by mass spectrometry

The nitrogen derivative molecule in 714X was found to be chemically close to camphoroxime but not identical to it.

To verify this hypothesis, camphoroxime was synthesized.

Comparing U.V. spectra of camphoroxime with those of the compounds of 714X shows a small discrepancy of the maximum absorption, indicating that the two products are slightly different.

## 2.5 Metal and mineral content

This test was carried out by plasma emission spectrometry and shows the following results in parts per million :

Aluminum	< 0.5 ppm	Calcium	0.5 ppm	Magnesium	6.5 ppm
Antimony	< 1.0 ppm	Chromium	< 0.1 ppm	Mercury	< 1.0 ppm
Arsenic	< 1.0 ppm	Cobalt	< 1.0 ppm	Molybdenum	< 1.0 ppm
Barium	0.7 ppm	Copper	0.01 ppm	Nickel	< 0.1 ppm
Bore	< 0.05 ppm	Iron	< 0.1 ppm	Phosphorus	< 5.0 ppm
Cadmium	< 0.05 ppm	Lead	< 1.0 ppm	Zinc	2.0 ppm

*Sodium chloride content (NaCl) was evaluated at 8.2g/liter.*

## 2.6 pH determination

pH=7

## 2.7 Summary of the chemical analysis evaluation

- a. **The absence of proteins and immunoglobulins** shows that 714X is not an immune serum prepared after injection to animals. 714X is not a vaccine.
- b. The presence of **sodium chloride** at a level of 8.2 g/liter shows that it is an isotonic solution having a pH=7 (physiological solution). This solution complies with norms for injectable solutions of the pharmaceutical industry.
- c. The gas chromatography coupled with the mass spectrometry reveals the presence of **camphor** or **trimethyl-(1.7.7) bicyclo (2.2.1.) heptanone-2** that we have quantified. Its concentration is 0.09 mg/ml (90 ppm). **A nitrogenated compound** and **hydrochloric acid** were also detected.
- d. The test using the camphoroxime that was synthesized shows that this molecule does not exist as such in the sample of 714X analyzed. The nitrogenated compound could not be clearly identified with the testing done.
- e. **Eighteen metals have been measured.** They are all at **trace levels**, of the order of ppm (parts per million) and are without biological significance, except magnesium, whose level of 6.5 ppm is still with **no therapeutic significance**. (This is the opinion of the laboratory. However, the manufacturer claims that the trace levels identified do have a biological significance.)

### **Summary :**

714X consists of an **isotonic solution at physiological pH (7) containing camphor**, or a **nitrogenated derivative of camphor**, at a level of **0.09 mg/ml complying with pharmaceutical grade injectable solutions.**

## 2.8 Complementary chemical analysis

Recently, two complementary tests were conducted on 714X using mass spectrometry analysis (ion selective). These tests were performed by two independent laboratories : one in Boston [March 1999] and the other in Toronto [September 2000].

Both have confirmed the presence of nitrogenated compounds in the 714X product.

## F. IMMUNE ASSAY TEST (IN VITRO) : SUMMARY

**Research Report :** *Immune Assay Test conducted on the 714X product*  
(Summary) *(Effect of 714X on peripheral blood monuclear cells in vitro)*

**Sponsor :** Diane Van Alstyne, Ph.D.  
Inventors Ink  
#23-130 MacPherson Ave.  
Toronto, Ontario, CANADA M5R 1W8

**Tests conducted :** March 1999, Boston, Massachusetts, USA

### SPONSOR'S SUMMARY OF RESULTS AND CONCLUSIONS

#### RESULTS

PBMCs and monocytes exposed to 714X *in vitro* showed the following effects :

- more than 50% cell activation and/or differentiation, resulting in morphological changes and cell adherence to microwell plates;
- an atypical immediate, transient accumulation of intracellular Ca<sup>+2</sup> in monocytes and not in control T-cells; and
- induction of cytokines, including TNF- $\alpha$ , IL-1 $\beta$ , IL-6 and IL-8 an increase in the intracellular level of cytokine-specific mRNAs including the following amplified PCR products: 362 bp for TNF- $\alpha$ , 330 bp for IL-1 $\beta$ , 496 bp for IL-6, and 407 bp for IL-8.

Structural analyses of molecular components contained in 714X and its inactive, negative control, revealed the presence of two camphor derived, nitrogen containing compounds, MW 169.15 and MW 151.25, unique to 714X.

#### CONCLUSION

Based on the foregoing data, Sponsor suggests that 714X may contain at least one component which acts as a chemokine agonist *in vitro*, possessing the established agonist characteristics of :

- Being capable of binding to a receptor to initiate activity;
- Possessing affinity; and
- Possessing intrinsic activity.

The results clearly demonstrate that 714X is a strong activator of monocytes/macrophages and induces the secretion of proinflammatory cytokines including TNF- $\alpha$ , IL-1 $\beta$ , IL-6 and IL-8 . Monocytes/macrophages play a key role in host immune defense. Macrophages represent a major recognition system for foreign cells including tumor cells, and a major source for a wide variety of secretory cytokines with immunomodulatory and antitumor activities, including proinflammatory cytokines TNF- $\alpha$ , IL-1 $\beta$ , IL-6 and IL-8. These data provide scientific evidence supporting that 714X is an immune modulator.

714X is thought to elevate the immune response and have some role in killing tumor cells. The results appear to support this theory by suggesting that induction of proinflammatory cytokines may represent at least one of the mechanisms responsible for *in vivo* anti-tumor activity of 714X.

Quality Statement by Quality Assurance :

Data Reviewed and Report Prepared by Sponsor Diane Van Alstyne, Ph.D.

Released August 25<sup>th</sup> 2000

## G. HOW 714X WORKS

- **714X is not designed to destroy diseased cells.**
- **714X is a product created to improve health by revitalizing the immune system and is not designed to directly act on disease related symptoms.**
- **714X supports natural defenses** (including the immune system) when introduced into the lymphatic circulation.

**The particular method of administration of the product makes it unique.**

A brief overview of **the physiology of the lymph system** is necessary given 714X's method of administration :

Most of the constituting elements of blood plasma flow freely through the capillary walls to form the interstitial fluid. Blood capillaries lose more fluid through filtration than they recover through reabsorption. The excess fluid filtered through the blood system (approximately 3 liters per day) penetrates the lymphatic capillaries where it creates the lymph.

The resulting lymph then flows in parallel to the large blood circulation. The lymph is then discharged into

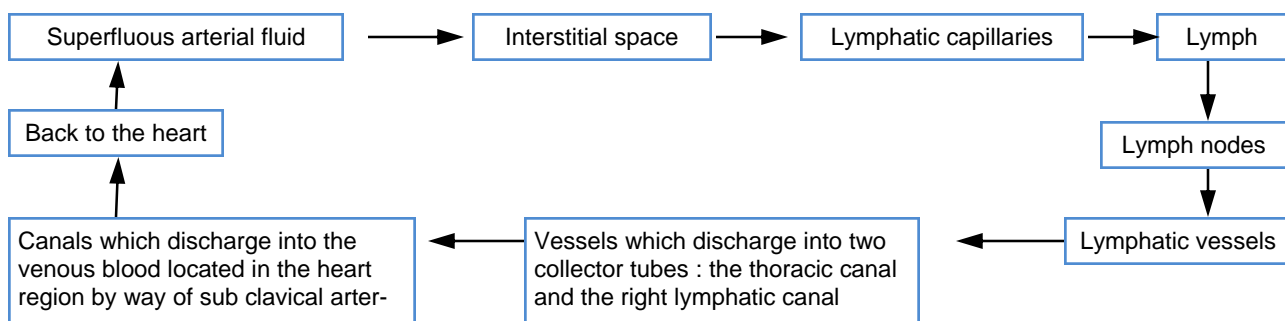
the venous blood (that is the blood which brings waste matter to the heart) at the junction of the sub-clavicle veins and the internal jugular veins in the neck area.

The lymphatic system is comprised of the lymph, the lymphatic vessels in which the lymph flows and many structures and organs which contain lymphatic tissue and bone marrow where lymphocytes are produced.

The lymphatic system fills several roles :

- 1. It drains interstitial fluids.** The lymphatic vessels drain any excess interstitial fluids located between the cells. This liquid once collected in the lymphatic vessels is called the lymph.
- 2. It carries away the digestive fats.** The lymphatic vessels transport the various fats and liposoluble vitamins absorbed by the digestive tube.
- 3. It protects the organism against foreign bodies.** The lymphatic tissue triggers immune responses. These responses are specific to bacteria, viruses or immature cells. The lymphocytes (a type of white blood cell that creates antibodies) with the help of macrophages, detect foreign bodies, microbes, viruses and immature cells such as cancerous cells.

*The lymph travels along this path :*



The lymph is a liquid flowing in the lymphatic vessels and is **in constant renewal**.

## G. HOW 714X WORKS (CONTINUED)

From an anatomical point of view, nature has provided the body with a double lymphatic circulation. These two circulations, which do not communicate with each other, act in a closed circuit. Never touching each other, they nonetheless both discharge into the blood stream (See adjoining diagram).

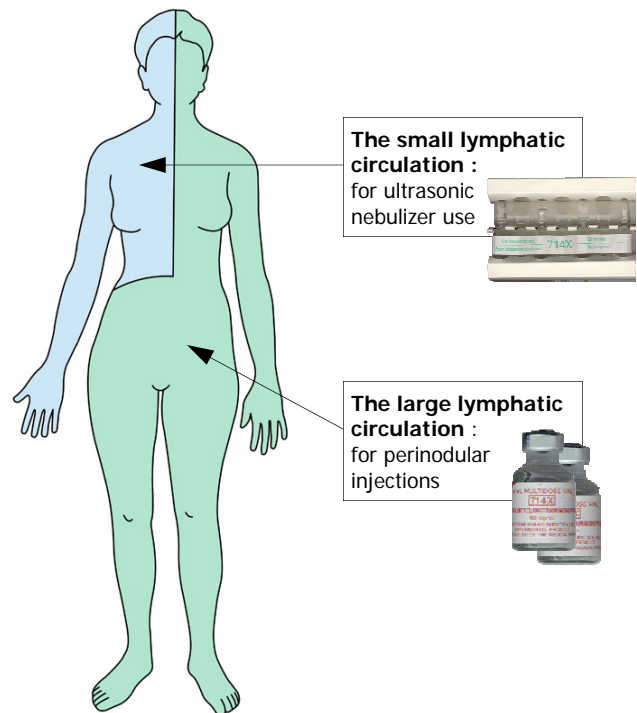
**The large lymphatic circulation** drains 75 % of the body, being the lower left and right sides of the body as well as the upper left side of the body.

**The small lymphatic circulation** drains 25 % of the body being the upper right side of the body.

To access the large lymphatic circulation, 714X must be introduced by way of perinodular injections into the right inguinal area.

To access the small lymphatic circulation, an ultrasonic nebulizer must be used to allow the nodes located in the respiratory tract to absorb 714X.

**Diagram 1 : A double lymphatic circulation**



### *How does 714X act?*

When introduced into the lymphatic system, 714X acts in three ways :

1. **It liquefies the lymph**, meaning that it renders the lymph more fluid and capable of easier circulation (better able to assure draining of cellular toxins).

This fluidifying action of 714X is produced by the sodium and ammonium chlorides contained in the product. A fluidified lymph can once again insure elimination of toxins and trigger appropriate immune responses.

*N.B. : Clinical observations using a lymphograph revealed that the lymph of a person afflicted with a degenerative disease is both thick and stagnant. It does not flow freely. This observation raised the hypothesis that the lack of fluidity in the lymph can be a biological precursor to degenerative diseases.*

2. **It brings nitrogen to the organism as an active ingredient.** Nitrogen is a fundamental element to the creation of living matter : it is also an essential element to cellular repair. It is carried to the blood stream by the lymphatic circulation.

In the specific case of cancer (uncontrolled immature cell division) immature cells reach a critical mass that requires nitrogen to develop. These cells then secrete a substance which paralyzes the immune system so that they can then get their required nitrogen from healthy cells.

A vicious cycle then is established which supports the growth of cancerous cells while the immune system is unable to act.

By bringing nitrogen to the immature cells, 714X stops the secretion of the paralyzing factor by the immature cells thus allowing the immune system to recover its natural functions.

## G. HOW 714X WORKS (CONTINUED)

- 3. 714X brings 18 trace elements** to the system thus promoting intercellular communications. The trace elements contained in 714X facilitate inter and intra cellular communications, which are necessary exchanges that may have been temporarily interrupted or blocked by the progressive clogging up of a stagnating lymph.

## H. THERAPEUTIC EFFECTS OF THE TREATMENT

714X acts directly on the lymph to restore its immune activity.

By its direct action on the lymph and its arrival into the blood stream (once mixed with the lymph), 714X normalizes the biological functions related to homeostasis. It is a product which harmonizes the biochemical reactions involved in normal cellular development, in tissue repair and in the body's specific and non-specific defense mechanisms.

714X's therapeutic effects can be summarized in two ways :

- 1. An increase in the body's natural defense mechanisms**, that is, the non-specific immune defense mechanisms that act upon foreign bodies such as bacteria and viruses. Natural defense mecha-

nisms include the skin, the mucous membranes, the anti-microbial chemical reactions, phagocytosis by neutrophils, inflammation and fever mechanisms.

- 2. An increase in the specific immune responses** principally assured by lymphocytes (B and T) and macrophages which acting together detect cells and foreign bodies, germs and cancerous cells flowing through the body. These immune responses are triggered to establish contact with foreign substances, destroy them and then eliminate them so that they will not impede the normal metabolic functions of the body's organs. 714X thus allows a weakened organism the opportunity to regain its defense mechanisms and therefore enhance the process of cellular repair.

## I. INTERACTIONS WITH OTHER HEALTH PRODUCTS

### 1. With non-conventional treatments

714X is a non-toxic treatment which supports the body's natural defense mechanisms. It is compatible with most therapeutic approaches seeking to bolster the biological terrain. These therapies are generally referred to as non-conventional, complimentary, alternative, etc.

Clinical observations have revealed certain exceptions in the case of :

- Vitamin B-12
- Vitamin E
- Shark and bovine cartilage as well as other antiangiogenic products.

These exceptions apply to dietary supplements but do not include vitamins B-12 and E found in food.

## I. INTERACTIONS WITH OTHER HEALTH PRODUCTS

### 1. With non-conventional treatments (continued)

- **Vitamin B12**

It is recommended not to simultaneously use 714X and vitamin B12 supplements.

Vitamin B12 accelerates cellular division (especially blood cells) without distinguishing healthy cells from immature cells. There is nothing to be gained by stimulating cell division in an already hyperactive organism. This restriction does not affect vitamin B12's properties in a normal context.

**For those persons having had a partial or total removal of the small intestine who wish to take 714X, the above exception concerning vitamin B12 does not apply as this vitamin is essential for such persons' survival.**

- **Vitamin E**

It is not recommended to use 714X and vitamin E supplements simultaneously.

It is a recognized fact that vitamin E protects cellular membranes against free radicals. This antioxidant property of vitamin E is important in the prevention of cancer, but once cancer has taken hold of the organism, this vitamin could create a protective

coating around immature cells and thus delay their identification and elimination by the immune system.

- **All antiangiogenic products / treatments**

It is not recommended to use 714X simultaneously with antiangiogenic products (products aiming at killing cancerous cells by shrinking blood vessels).

All antiangiogenic products/treatments seek to asphyxiate a tumoral mass by stopping its vascularisation process. This is a valid approach if one considers cancer as a localized problem.

However, if one considers cancer as a generalized disease which localizes itself in a vulnerable area of the body, it becomes useless to act locally if the defense mechanisms are not supported. In this approach, the tumor is only confirmation of a more profound problem.

All antiangiogenic products/treatments are incompatible with 714X as 714X requires a good blood circulation so that the body may eliminate tumoral masses.

### 2. With conventional treatments

714X is not toxic and does not destroy diseased cells. It only supports the body's natural defense mechanisms and its immune system. It can be used **with most conventional treatments** whether they be surgery, radiation therapy or chemotherapy (**except for the ones with antiangiogenic properties**). It does not hinder their respective modes of action nor does it modify their effectiveness. 714X combined with conventional therapies can only benefit the patient as it promotes the elimination of metabolic waste matter (meaning toxins) produced by the above mentioned conventional treatments. It can also reduce the intensity of certain side effects associated with conventional therapies such as nausea, loss of appetite, etc. as it helps the body to cleanse itself by favoring the circulation of the lymph and by assisting in cellular repair by bringing nitrogen to the organism.

#### **Manufacturer's recommendation**

If surgery is to occur and the patient's life is not in any immediate danger, it is recommended that a full 21 consecutive day course of 714X be done **prior to surgery**. This procedure can only assist the organism by promoting a strong local and systemic immune response.

For those cancer patients requiring surgery, the above recommendation becomes even more important as it reduces the risks of spreading cancer to a new site (metastasis), given that surgery can assist the migration of cancerous cells via the lymphatic system.

## J. DOSAGE

714X may be used for preventive purposes. In such cases, one to three consecutive cycles of perinodular injections are recommended.

When dealing with a degenerative disease confirmed by a medical diagnosis, 714X may be used by itself or in conjunction with other treatments. In these cases, **a minimum of 6 to 8 consecutive cycles of injections are required. In some cases, continued use may be necessary** even though 714X was not conceived as a lifelong medication.

The quantity of product to be injected as well as the frequency of the injections appears in the adjacent calendar :

VOLUME TO BE USED		
Day	First cycle	Subsequent cycles
Day 1	0.1 ml	0.5 ml
Day 2	0.2 ml	0.5 ml
Day 3	0.3 ml	0.5 ml
Day 4	0.4 ml	0.5 ml
Day 5 to 21 incl. (17 days)	0.5 ml	0.5 ml
<b>Volume used by syringe:</b> <i>(if BD Allergy Syringe Tray #305539)</i>	<b>9.5 ml</b>	<b>10.5 ml</b>
Loss in needle <i>(EXCEPT BD Allergy Syringe)</i>	2.1 ml	2.1 ml
<b>Total volume by syringe:</b> <i>(EXCEPT BD Allergy Syringe)</i>	<b>11.6 ml</b>	<b>12.6 ml</b>

It is pointless to increase daily doses in the hope of speeding up the healing process. The recommended dosages have been clinically determined and remain those having afforded the best results.

1. Progressive doses are administered during the first five days of the first cycle beginning with 0.1 ml. on day one, 0.2 ml on day two and so on until day five.

**This progression is necessary** to avoid overtaxing the elimination organs due to the increased number of toxins being eliminated once the lymph becomes more fluid.

2. From day five of the cycle to day twenty-one, the daily dose will be 0.5 ml.
3. Each twenty-one day cycle must be followed by two days with no injections being performed to allow the organism to rest.
4. The second and all subsequent cycles will consist of 0.5 ml injections from day one to day twenty-one inclusively.

5. Children weighing less than 30 kg (66 pounds) will receive one half of the daily dose prescribed for adults but will also complete full twenty-one day cycles.

### *Ultrasonic nebulizer treatments*

Ultrasonic nebulizer treatments require a special mixture of 714X which has a different molecular weight than the injectable product. The nebulizer product is packaged in 2 ml ampoules, seven ampoules being included in each box. Three boxes are required for a 21 day cycle.

The nebulizer treatment is a secondary treatment which begins only during the second injection cycle. A 12 hour interval is required between the injections and the inhalations by way of the nebulizer. Some people prefer injecting in the morning while others prefer the evening. This depends on each person's tolerance and routine. From a biological standpoint, there is no difference. It remains a strictly personal choice.

## K. HOW TO ADMINISTER 714X

(A separate document entitled *How to administer 714X—utilization protocol*, is available upon request.)

714X is administered in one of two ways to reach **both lymphatic circulations** :

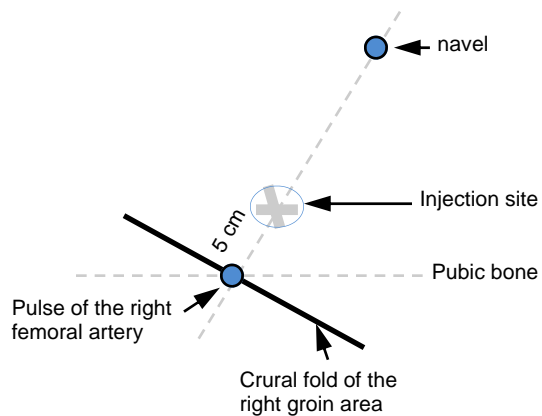
1. **The perinodular injection;**
2. **Inhalation by way of an ultrasonic nebulizer.**

### 1. Perinodular injection

The basic 714X treatment, which targets the large lymphatic circulation, is the perinodular injection. Whether 714X is used in a preventive mode or to restore some imbalance which has occurred, the perinodular injection remains the treatment of choice.

The perinodular injection is to be performed in the right groin area unless the right inguinal nodes have been surgically removed. This area insures the best possible draining of the lymph.

The injection is performed between 3 and 5 cm (1 to 2 inches) above the pulse of the right femoral artery located in the crural fold, on an imaginary line drawn between the femoral artery and the navel.



*The perinodular injection must be done :*

1. Each day for 21 days.
2. After cooling down the injection site.
3. With the recommended professional material (including injectable 714X product).
4. According to a tried and tested methodology.

### 2. Inhalation by nebulizer

A small device called a nebulizer, capable of transforming 714X into small droplets, must be purchased to perform the inhalation technique. The small droplets form a mist which must be inhaled. The product is then absorbed by the lymph nodes of the respiratory tract.

*The inhalation by way of nebulizer must be done :*

1. Each day for 21 days (12 hours after the injection has been done).
2. With the recommended professional material (including nebulizer specific 714X product).
3. According to the proposed protocol.

**USING 714X BY WAY OF A NEBULIZER CANNOT REPLACE PERINODULAR INJECTIONS OF 714X.**

## L. SIDE EFFECTS

*Side effects* are generally understood to mean foreseeable and harmful side effects present amongst all users. Such effects are not systematically found in people using 714X.

To the contrary, using 714X can increase the quality of life of its users (increased vitality and pain threshold, better appetite, less stress, etc.). **Each person's constitution as well as their body's need for cleansing and cellular repair will be factors influencing how 714X acts upon them.** Each person is different. It is most difficult to gauge 714X's impact from one person to another.

Occasionally, during the first treatment cycle, certain observations will confirm that the cellular cleaning process has begun. Most users do not notice any particular changes except for improved activity in the elimination organs (bladder, intestines, lungs).

It is recommended however to strictly apply the utilization protocol of 714X to avoid any discomforts which may result from a rapid application of the product.

## M. CONCLUSION

714X is a health product conceived and manufactured to support the body's natural defenses. The method chosen to achieve this objective is the liquifying of the lymph. Once liquefied, the lymph can resume its normal draining functions as well as its other immunological properties.

714X is easily absorbed by the body : it sustains life by bringing to the organism fundamental elements such as

nitrogen (brought to the system by the camphor molecule) and a variety of trace elements.

714X is non-toxic. It produces no harmful side effects. It may be used in a preventive mode. It is recommended for those people suffering from some sort of immune deficiency or degenerative disease confirmed by a medical diagnosis.